

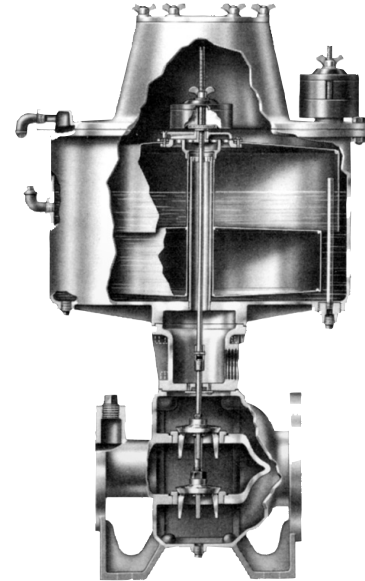
97170 Double Port Pressure Regulator

The S&J 97170 Double Port Pressure Regulator maintains a constant upstream or downstream pressure in gas blanketing, vapor recovery and other similar gas systems. The Regulator is a double port, direct drive, float actuated valve.

Simple weights provide a factory calibrated set point with the standard range being from minus 0.4" to minus 0.1" and an optional minus 0.5" to 1.5" range for higher pressures. The standard for a flanged aluminum body is 2" to 8" with Stainless Steel pallets. An optional 1" NPT connection is also available. A large diameter float provides greater sensitivity with reduced line bounce. A reliable control protects valuable equipment. There are also no linkages to corrode, bind or develop friction.

The valve can be configured as a back pressure regulator to provide a reliable gas flow or as a pressure reducing regulator which will maintain a constant downstream pressure.

Its aluminum and stainless steel components withstand the severest of process environments. The S&J 97170 is especially designed for hydrogen sulfide and hot, wet methane which are the main components of digester gas streams in municipal waste water treatment facilities.



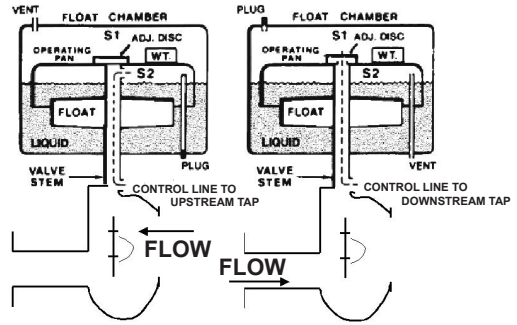
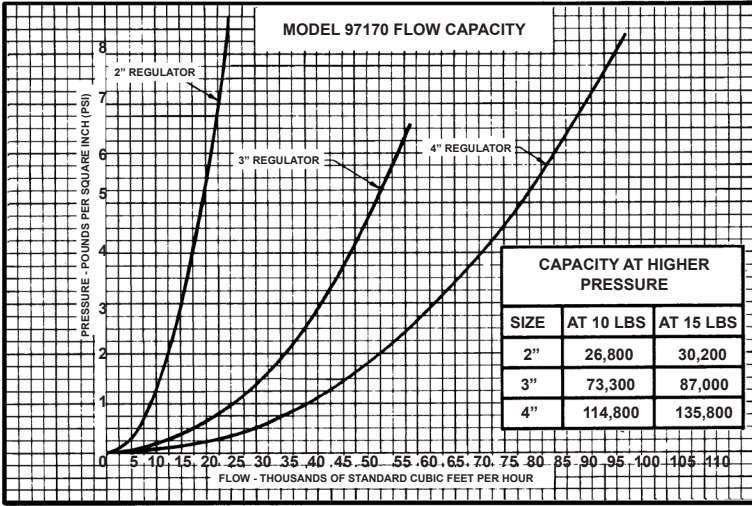
Features

- Direct Drive Actuation
- One Valve for Upstream or Downstream Control of Low Pressure Gas Lines
- Float and Liquid Design for Greater Sensitivity
- Fewer Moving Parts for Longer Service Life
- No External Power Source Required

97170 Double Port Pressure Regulator

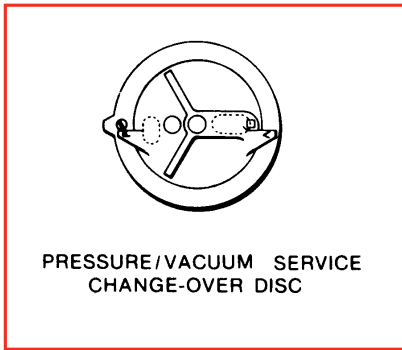


Dimensions

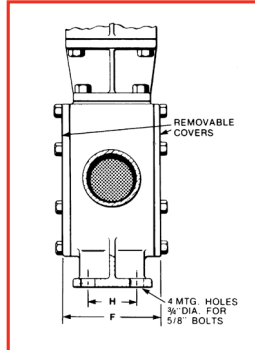


UPSTREAM CONTROL OR BACK PRESSURE REGULATION valve lifts when upstream pressure exceeds set point.

DOWNSTREAM CONTROL OR PRESSURE REDUCING CONTROL valve lifts when downstream pressure drops below set point.



VIEW A-A



SECTION B-B

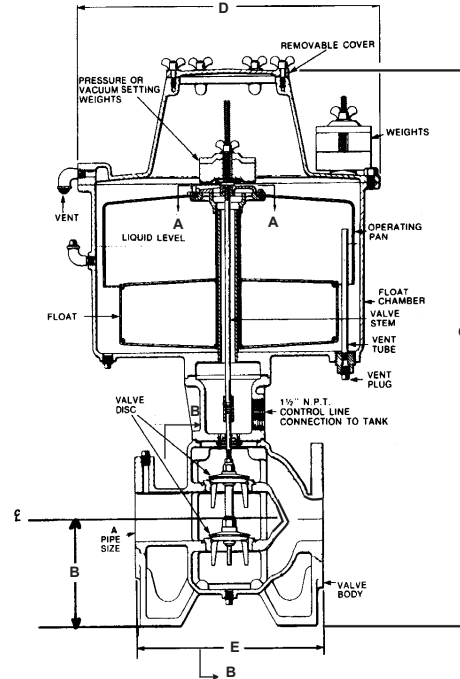


Table of Dimensions for Standard Pressure Range (Inches [mm])				
A	B	C	D	E
2 [50]	6 3/4 [171]	33 3/4 [857]	19 1/4 [489]	13 [330]
3 [75]	6 3/4 [171]	34 1/2 [876]	19 1/4 [489]	14 [356]
4 [100]	6 3/4 [171]	35 3/8 [899]	19 1/4 [489]	17 [432]
6 [150]	10 1/4 [260]	40 3/4 [1035]	19 1/4 [489]	20 [508]
8 [200]	13 5/8 [346]	67 1/2 [1715]	19 1/4 [489]	25 7/8 [657]

All designs subject to change. Certified dimensions and specifications available upon request.



97170 Ordering Guide

Model Number Selection

The model number will have a base number **97170** followed by 4 digit numbers. These digits will represent 4 sets of option tables.

97170 - AB - CD

Table A - Valve Body Material

Option A	Valve Body Material
1	Aluminum
2	Steel

Table C - Pressure Range Valve Configuration

Option C	Pressure Range
1	-0.4" to 1" W.C.
2	0.5" to 1.5" W.C.

Table B - Line Size

Option B	Line Size
1	1"
2	2"
3	3"
4	4"
6	6"
8	8"

Table D - Control

Option D	Description
1	Back Pressure
2	Pressure Reducing

Setting Range

11 =

12 =

21 =

22 =

Valve Configuration

Standard Pressure Range (-.4" to 1") / Back Pressure Configuration

Standard Pressure Range (-.4" to 1") / Pressure Reducing Configuration

High Pressure Range (.5" to 1.5") / Back Pressure Configuration

High Pressure Range (.5" to 1.5") / Pressure Reducing Configuration